



## **Owners Manual and Operating Instructions**



**ADULT ASSEMBLY REQUIRED**

**USE ONLY UNDER ADULT SUPERVISION**

**READ AND FOLLOW THESE INSTRUCTIONS COMPLETELY**

**THE RIDER MUST ALWAYS WEAR PROPER PROTECTIVE GEAR,  
INCLUDING A CPSC APPROVED HELMET, WHILE OPERATING THE  
PRODUCT**

## Safety Information

PLEASE READ AND FULLY UNDERSTAND THIS OWNERS MANUAL BEFORE OPERATING  
THE PRODUCT  
KEEP THIS MANUAL FOR FUTURE REFERENCE



This symbol is important. It is the WARNING symbol. The warning symbol precedes safety instructions. Make sure the child understands these instructions. Failure to follow these instructions may result in injury to the rider or to others.



### **WARNINGS:**

- Adult assembly is required.
- Adult supervision is required.
- This product should only be used by persons 1-1/2 to 4 years old.
- Do not allow a child to ride without an approved helmet, with the chinstrap securely fastened.
- Do not allow a child to ride without shoes.
- Do not allow a child to ride without the seatbelt fastened and properly adjusted.
- Do not allow a child to ride the product at dusk, at night or at times of limited visibility.
- Do not allow a child to ride on roadways or alleys.
- Do not allow a child to ride off road, on grass or wet surfaces.
- Do not allow a child to ride on steeply sloped areas or hills.
- Do not allow a child to ride near steps.
- Do not allow a child to ride near swimming pools, or other bodies of water.
- Do not allow a child to ride the product with the steering mechanism locked.
- Always comply with local laws and regulations.
- For use on smooth paved surfaces only.
- Understand all operating procedures before use.
- Use the product at walking speed only.
- Do not tow or pull any objects with the product.
- Avoid finger entrapment - Use care when folding and unfolding the canopy.
- Never ride with more than one person. Maximum weight is 60 lbs. (27 kg).
- Do not place more than 8 lbs. In the carry bag.
- Avoid strangulation - Do not suspend strings or items with strings from the product.
- Replace worn or broken parts immediately.

IF YOU HAVE ANY QUESTIONS REGARDING THE OPERATION OF THIS PRODUCT, PLEASE  
REFER TO THIS OWNERS MANUAL OR CALL 1-800-872-2453.

## Tools Required For Assembly

-Phillips screwdriver

-Two small adjustable wrenches

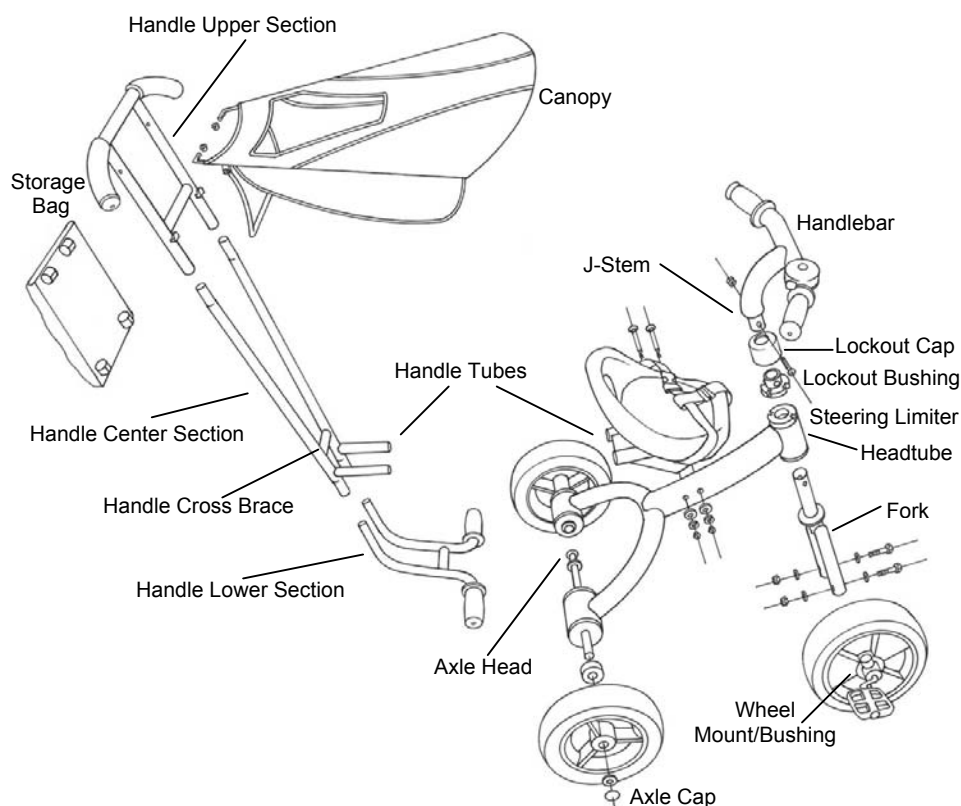
-Hammer

## Assembly Instructions

Do not discard any of the packaging materials until you have finished assembly of the product to ensure that you do not accidentally discard any parts.



**WARNING! An adult must assemble this product. Keep small loose parts and plastic bags out of the reach of children.**



Note: All models may not have all parts and features shown.

## Tricycle Assembly

### Front Assembly:

- Install the fork into the headtube.
- Align the steering limiter tab on the top of the fork crown with the slot in the lower headtube bushing.
- Install the steering lockout bushing on the top side of the fork steertube.
- Place the bellows on the handlebar J-Stem.
- Place the steering lockout cap on the handlebar J-Stem.
- Place the handlebar J-Stem into the fork.
- Holding the cap up, insert the 30mm long screw through the lockout bushing, hole in stem, and hole in fork.
- Install the nut on the screw. Tighten the nut sufficiently to hold the assembly together.
- Allow the cap to drop into the slots in the steering limiter bushing.

Note: Check the operation of the steering mechanism. The steering is locked (will not steer) when the slots in the upper and lower lockout bushings are aligned, and the cap is all the way down and engaged with both slots. The steering mechanism is functional when the cap is ½ way down and engaged with the top slots only.



**WARNING!** Do not allow a child to ride the tricycle with the steering mechanism locked.

### Front Wheel:

- Place the wheel mount/bushings into the bottom end of the fork tubes.
- Align the holes on the fork tubes with those in the wheel mount/bushing.
- Install a flat washer on the 37mm long screws.
- Insert the screw through each fork tube and the wheel mount/bushing.
- Place a washer and cone nut on each screw.
- Tighten each sufficiently to ensure the front mount/bushing does not come off.

### **Seat and Seat Bracket:**

- Locate the seat bracket on the frame and align the mounting holes with those in the frame.
- Insert a 55mm long screw through each seat bracket and matching frame hole. (One side of the seat bracket has square holes that match the square bolts included.)
- Place a flat washer, lockwasher, and cone nut on each screw.
- Tighten each sufficiently to ensure the seat bracket is secure on the frame.

### **Rear Axles and Wheels:**

- Insert one axle pin, through the rear frame bushings, from the inside to the outside of the product.
- Place a plastic spacer, then a wheel, then a flat washer, then an axle cap on the axle.
- Tap the axle cap onto the axle. (Hint: This assembly is easily accomplished by setting the axle head end on a workbench, or similar surface, with the axle pointing up, and tapping the cap onto the axle with a hammer.)
- Repeat for the other side.



**WARNING!** The axle caps must be sufficiently seated to ensure they will not come off.



**WARNING!** Check pedaling, steering, and rear wheel operation to ensure they function properly.

## **Handle / Canopy Assembly**

### **Handle Assembly:**

- Assemble the handle middle section using the cross brace bracket found in the parts bag and the hardware (bolts and knob nuts) found on the handle middle section. Match the square holes in the cross brace with the square shank on the bolts. Tighten the knob nuts sufficiently to secure the brace.
- Install the upper section of the handle by inserting the two tubes into the matching tubes in the handle middle section. Push the two spring buttons in while continuing to insert the upper section into the middle section. Push the upper section into the middle section until the spring buttons engage in both holes in the middle section. Ensure the spring buttons are engaged by pulling the upper section.
- Install the lower section (foot rests) of the handle by inserting the two tubes into the matching tubes in the handle middle section. Push the two spring buttons in while continuing to insert the lower section into the middle section. Push the lower section into the middle section until the spring buttons engage in both holes in the center section. Ensure the spring buttons are engaged by pulling the lower section.

### **Canopy Assembly:**

- Remove the nylon lock nuts from the canopy frame. Insert one side of the canopy frame into the hole in the upper section of the handle. Pull the canopy frame to insert the other side through the other hole in the handle. Install both nylon lock nuts. Note: The nylon lock nuts must be tightened until the nylon is engaged with the threads, over tightening the nuts can damage the canopy frame.
- Remove the nylon lock nuts from the canopy support bracket. Insert one side of the support into the hole in the tab on the underside of the canopy. Pull the bracket to insert the other side through the other tab on the underside of the canopy. Install both nylon lock nuts. Note: The nylon lock nuts must be tightened until the nylon is engaged with the threads, over tightening the nuts can damage the canopy support.

### **Handle / Canopy to Tricycle Assembly:**

- Install the handle to the product by inserting the two handle tubes into the matching tubes in the seat support. Push the two spring buttons in while continuing to insert the handle into the seat support. Push the handle tubes until the spring buttons engage in both holes in the support. Check to ensure the spring buttons are engaged by pulling the handle.
- Attach the bag to the handle using the Velcro® fasteners.
- Remove the handle from the product by pushing in the spring buttons while pulling the handle from the seat support.

**Note:** The buttons on the handle cross brace can be unscrewed and these are to be inserted into the handle tubes on the tricycle frame when the handle is not installed.

## **Adjustment Instructions**

There are no adjustments required for this product.

## **Operating the Product**

After properly assembling the product, it is ready for use.  
Ensure the rider is aware of all operating features. Adult supervision is required.

## **Maintenance**

Proper maintenance is required to ensure the product continues to operate properly.

Keep the product clean and free of dirt, dust and water. This will prolong the useful life of the product. Frequently check the product and replace any damaged, missing or badly worn parts.

Frequently check all screws and fasteners, re-tighten any that are loose, replace any that are missing or damaged.

No lubrication is required.



**WARNING!** If anything does not operate properly, discontinue use.

## **Limited Warranty**

Part or model specifications are subject to change without notice.

This Limited Warranty is the only warranty for this product. There are no express warranties. The only uses for this product are described in this manual. Warranty registration is not required. This limited warranty extends only to the original consumer and is not transferable.

### **What does this Limited Warranty cover?**

This Limited Warranty covers all parts of the product.

### **What must you do to keep the Limited Warranty in effect?**

This Limited Warranty is effective only if:

- The product is completely and correctly assembled;
- The product is used under normal conditions for its intended purpose (see “Warnings” for excluded activities);
- The product receives all necessary maintenance and adjustments.

### **What is not covered by this Limited Warranty?**

This product is designed for recreational use only. This Limited Warranty does not cover normal wear and tear, normal maintenance items, or any damage, failure, or loss that is caused by improper assembly, maintenance, adjustment, storage, or use.

This Limited Warranty is void if the product is ever:

- Used for stunt riding, jumping, acrobatics, or similar activity;
- Ridden by more than one person at a time, or the weight limit is exceeded;
- Used in a manner contrary to the instructions in this manual.

### **How long does this Limited Warranty Last?**

All components are warranted for six (6) months from the date of purchase.

### **What will the manufacturer do?**

The manufacturer will replace, without charge to you, any component found to be defective. The original owner must pay all labor and transportation charges associated with the repair or warranty work.

### **How do you get service?**

Phone Technical Service Department M-F 8:00am – 4:30pm (E.S.T.) at 1-800-872-2453.

### **What rights do you have?**

This Limited Warranty gives you specific legal rights. You may also have other rights which vary from state to state.